

# Smartsheet for Retail

## Overview

In the world of retail, effective work execution is key to putting customers first to maintain a competitive advantage. From expanding to new locations to store communications to marketing campaigns, leading retailers turn to Smartsheet.

Smartsheet empowers retail companies to streamline and stabilize repeatable processes, including supply chain management, new product development, tracking strategic initiatives, and more. With Smartsheet, teams gain more visibility into the work being done and instant return on investment, all so they can continuously improve the customer experience.

## How Does Smartsheet Help My Organization?

Leading retailers rely on Smartsheet to deliver on initiatives that drive greater customer delight.



### Store Openings and Renovations

Open stores on time and under budget, enable visibility into construction and renovation projects, and recognize new store revenue faster.



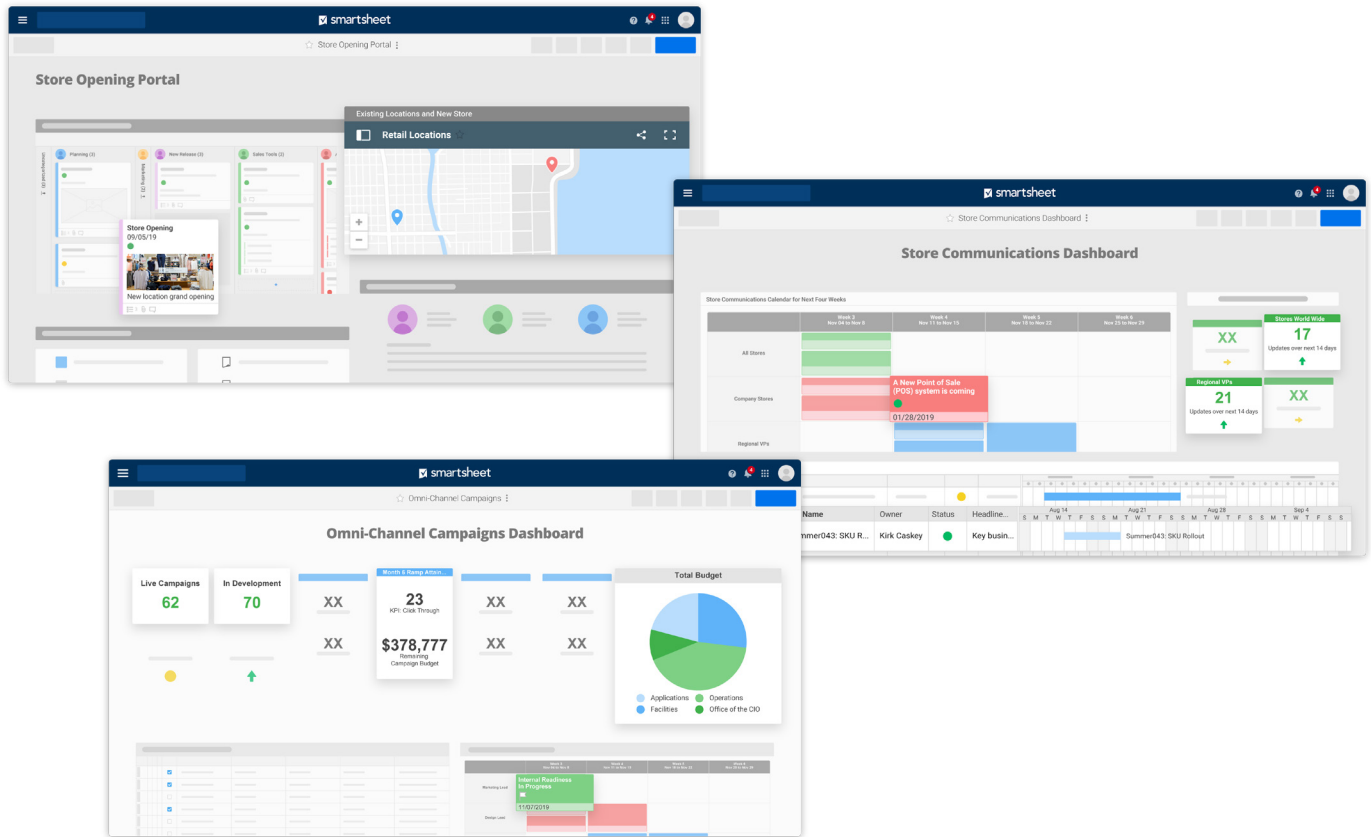
### Store Communications

Enhance in-store customer experience, ensure store worker compliance, and improve efficiency with an auditable system of store communications.



### Omnichannel Campaigns

Increase cross-channel integration and management, reduce campaign expenses, and realize campaign results faster.



## Key Benefits



### Visibility

Self-service reports and dashboards provide real-time visibility into resources, status, and performance, so you can rapidly align operations to strategy.



### Flexible Control

Smartsheet gives you complete control to make changes or enforce structure for your collaborative work — no coding required.



### Simplicity

Smartsheet's familiar interfaces, designed for how people really work, lead to rapid and broad adoption across your organization.



### Mobile

Get real-time access to Smartsheet and seamlessly view and update data, wherever you are, with your mobile device or tablet.